

Wildland Fire and Fuels R&D Strategic Plan

- Virtual core fire science caucus – 2003
- The Fire & Fuels R&D Strategy – 2006
- External Peer Review – 2007



Colin C. Hardy, Ph.D.
Program Manager — *Fire, Fuel, and Smoke Science*
RMRS, USDA Forest Service, Missoula, Montana

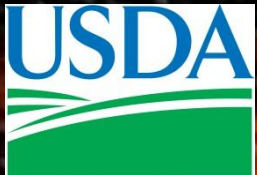


Research and Development Within the U.S. Forest Service

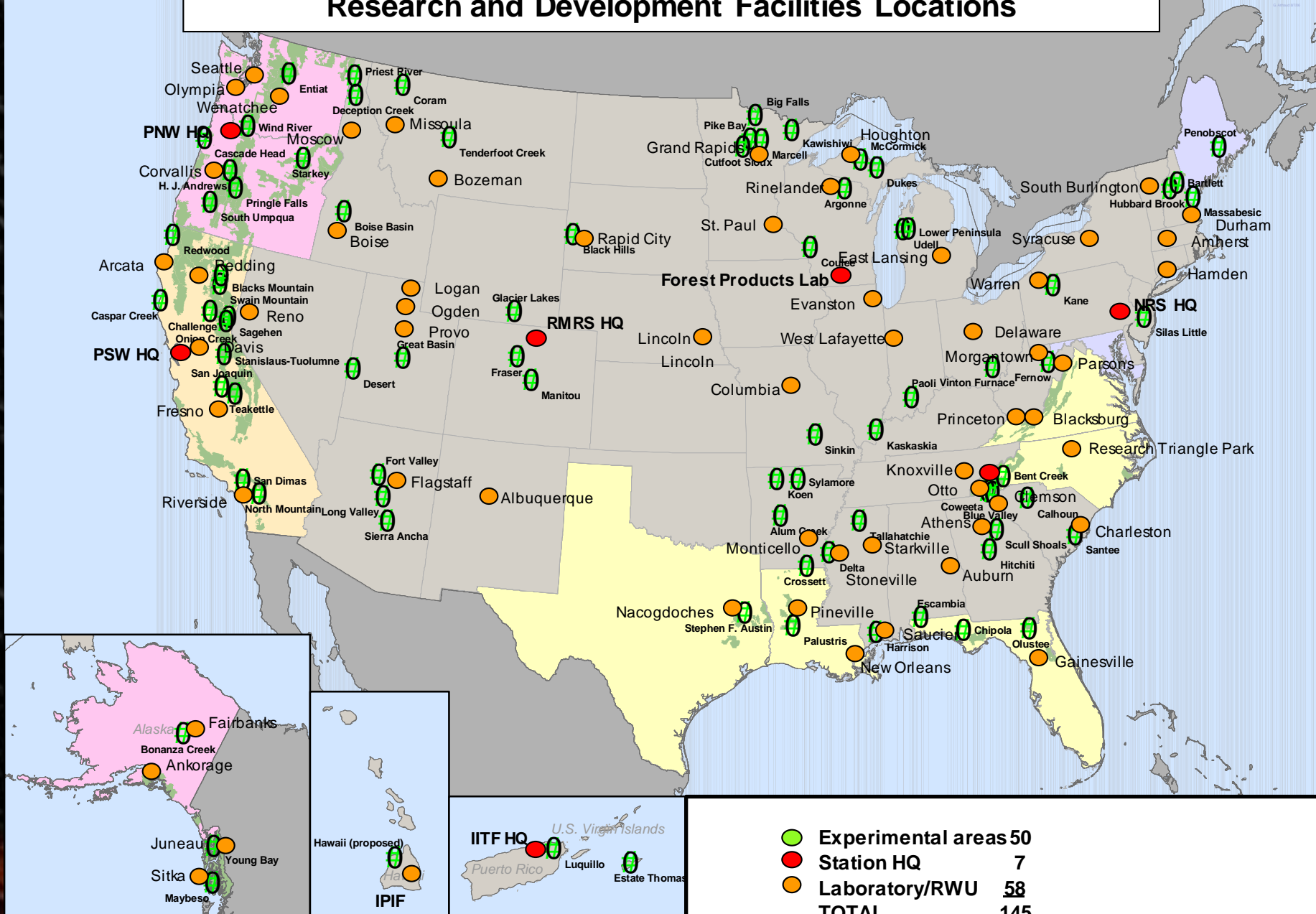


Research and Development Strategic Program Areas:

- Wildland Fire and Fuels
- Invasive Species
- Water and Air
- Wildlife and Fish
- Resource Management/Use
- Outdoor Recreation
- Inventory and Monitoring



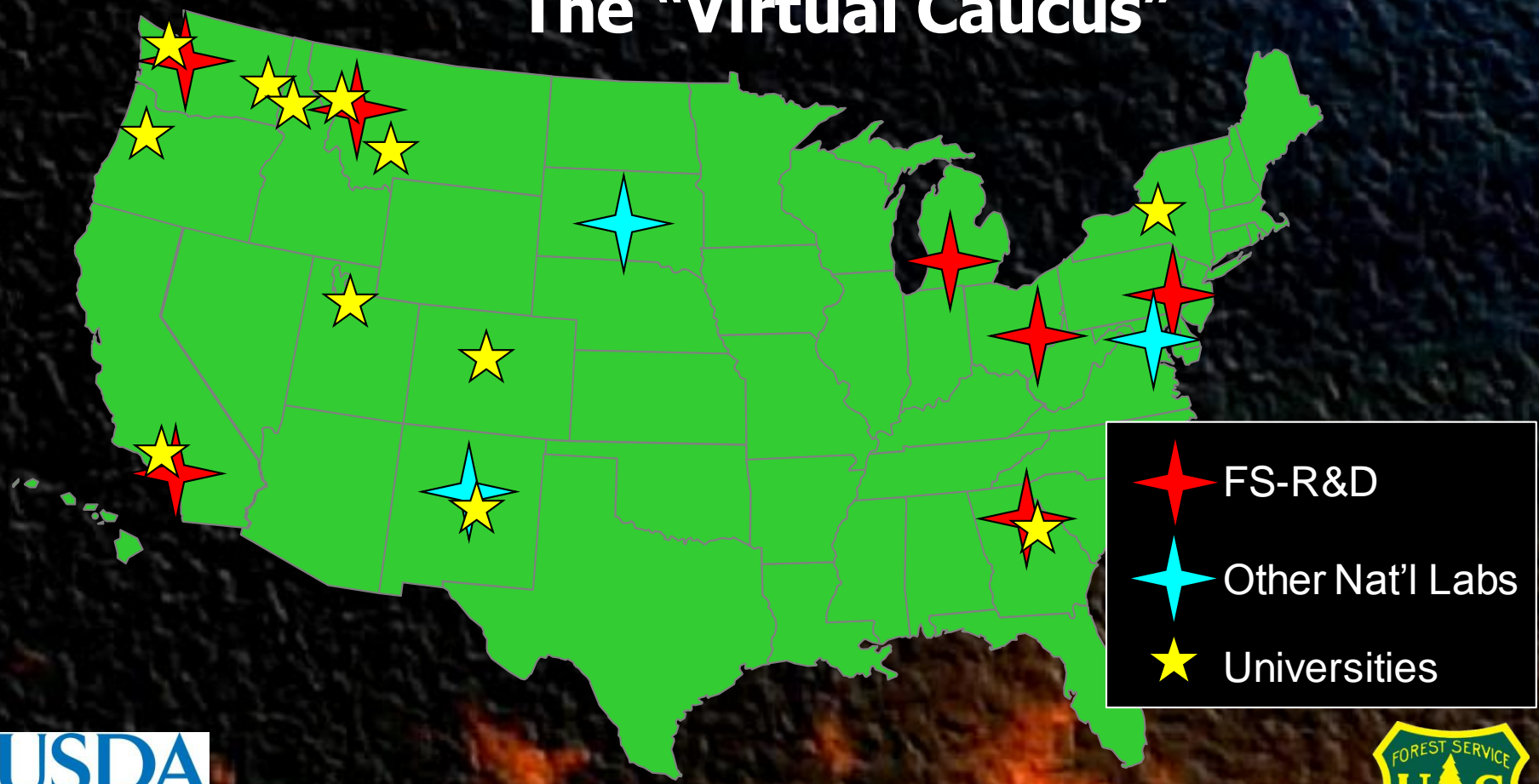
Research and Development Facilities Locations

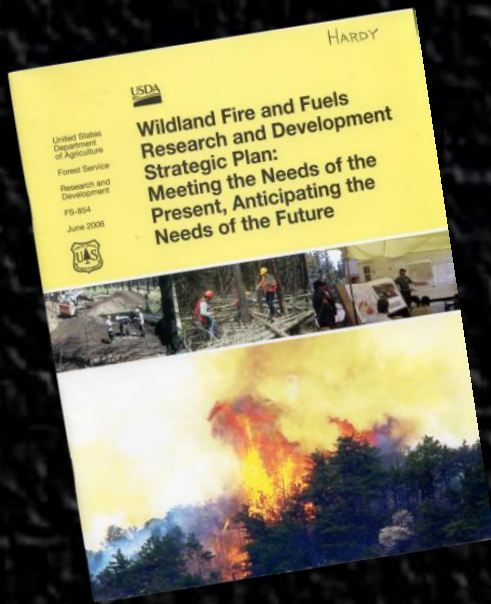


	Experimental areas	50
	Station HQ	7
	Laboratory/RWU	58
	TOTAL	145

Wildland Fire and Fuels Research & Development

The "Virtual Caucus"

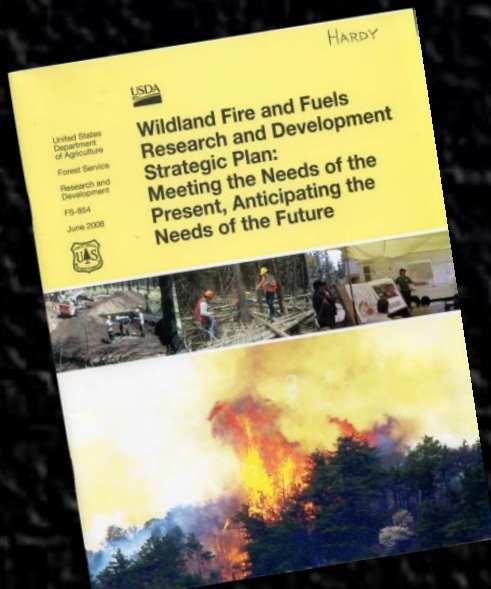




Strategic Plan for Wildland Fire and Fuels Research and Development (2006)

Three Strategic Goals:

1. Conduct basic and applied scientific research.
2. Promote application of knowledge and tools.
3. Provide leadership.



Strategic Plan for Wildland Fire and Fuels Research and Development (2006)

Fire R & D Portfolios:

Goal 1. Advance the biological, physical, social, economic, and ecological sciences.

- A. Core Fire Science**
- B. Ecological and Environmental Fire Science**
- C. Social Fire Science**
- D. Integrated Fire and Fuels Management**



Strategic Plan for Wildland Fire and Fuels Research and Development (2006)

Fire R & D Portfolios:

Goal 2. Develop and deliver knowledge and tools to policymakers, wildland fire managers, and communities.

E. Science delivery

- 1. Synthesis and tool development**
- 2. Science application strategy**

Fire Research Portfolio Areas

Core (physical) Fire Science - physical fire processes, fire characteristics at multiple scales, and fire danger assessment.

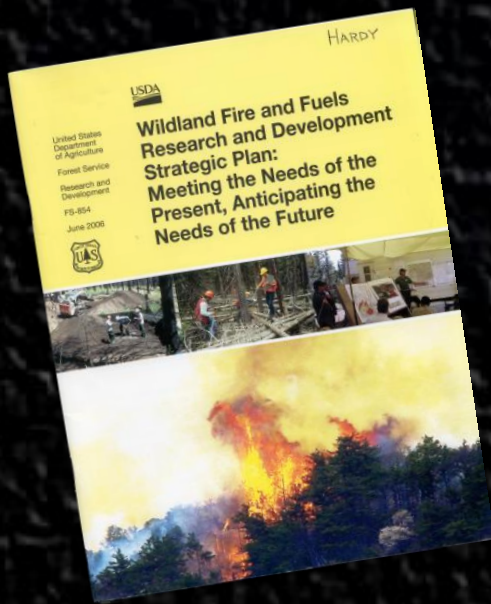
Ecological and Environmental Fire Science - fire effects on ecosystem components; fire and environmental interactions.

Social Fire Science - public interactions with fire and fuels management, socio-economic aspects of fires and fuels management, and organizational effectiveness.

Integrated Fire and Fuels Management - management strategies at multiple scales; treatment and disturbance effects; and forest operations, including biomass utilization and product development associated with fire and fuel management activities.

Science Delivery - ensuring that knowledge generated by the Forest Service is transferred to and adopted by policy makers, wildland fire managers, and local communities.



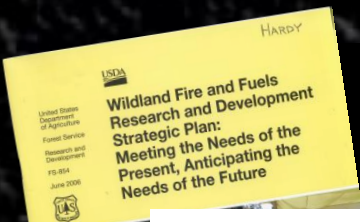


Strategic Plan for Wildland Fire and Fuels Research and Development (2006)

Fire R & D:

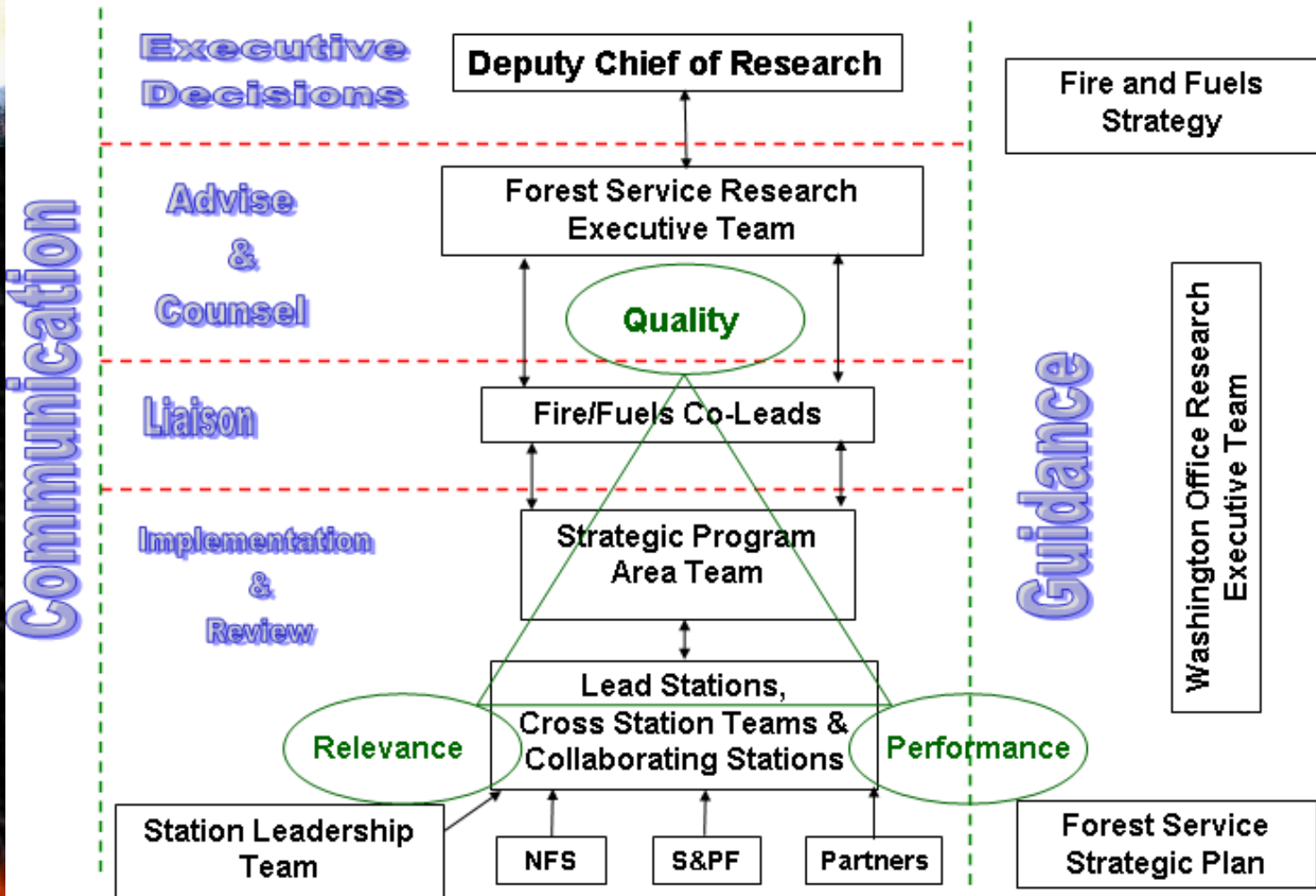
Goal 3. Provide Federal leadership for collaborative, focused, coordinated, responsive, and forward-looking wildland fire-related R&D for all ownerships, now and in the future.

Strategic Plan for Wildland Fire and Fuels Research and Development

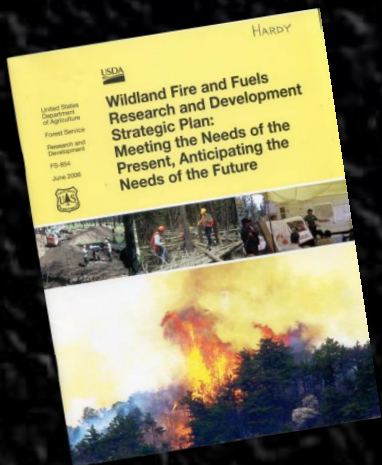


Draft 8/17/05

Fire & Fuels R&D Strategy: Portfolio Management



Wildland Fire and Fuels Research and Development External Peer Review -- 2007



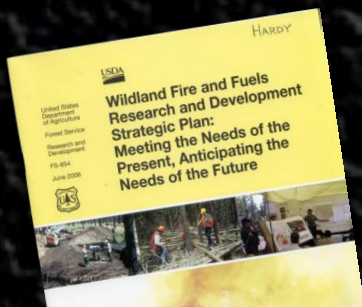
Martin E. Alexander, Canadian Forest Service
Nathan C. Benson, National Park Service
Timothy J. Brown, Desert Research Institute
Norman L. Christensen, Jr., Duke University (Chair)
Hanna J. Cortner, Cortner and Associates
Philip N. Omi, Colorado State University
R. Gordon Schmidt, Brookings Institute
Ayn Shlisky, The Nature Conservancy
Stephen K. Swallow, The University of Rhode Island

Wildland Fire and Fuels Research and Development External Peer Review -- 2007



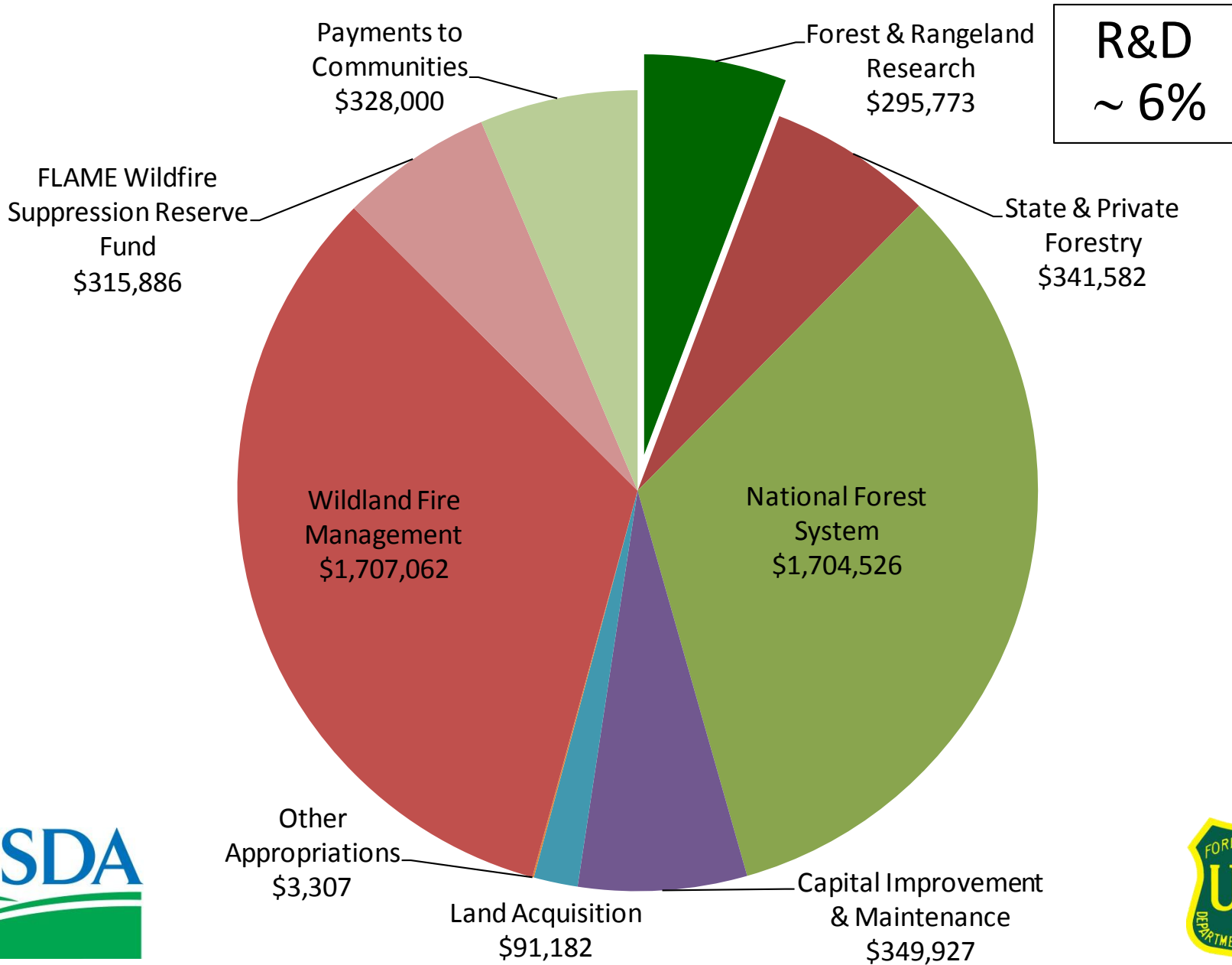
- Enhance adaptive management. Fire management R&D should be an exemplar of adaptive management in its own programs.
- Develop strategies to enhance and regularize involvement of managers and decision makers in the establishment of priorities.
- Develop and articulate operational criteria to measure relevance and success. The production of tools and the delivery of information are necessary, ... but success measures are insufficient.

Wildland Fire and Fuels Research and Development External Peer Review -- 2007

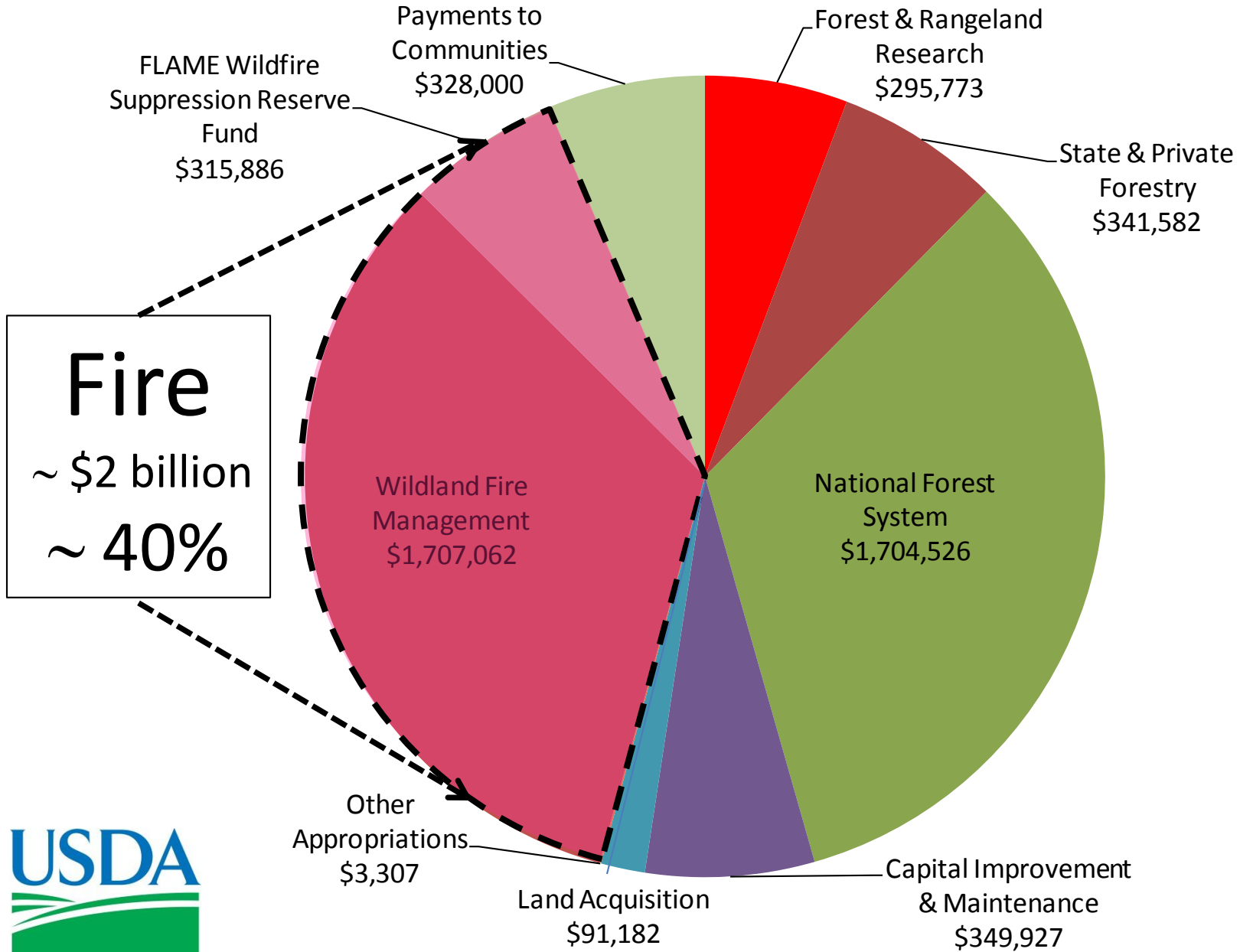


- Encourage more problem-oriented interdisciplinary research.
- Continue to catalyze and build partnerships. ... building partner capacity in areas not well met by Program resources ... strategically engaging in international work that builds on unique strengths .
- Define a few high-priority focal themes for integrative, interdisciplinary research. Input from managers and collaborative partners should be sought.

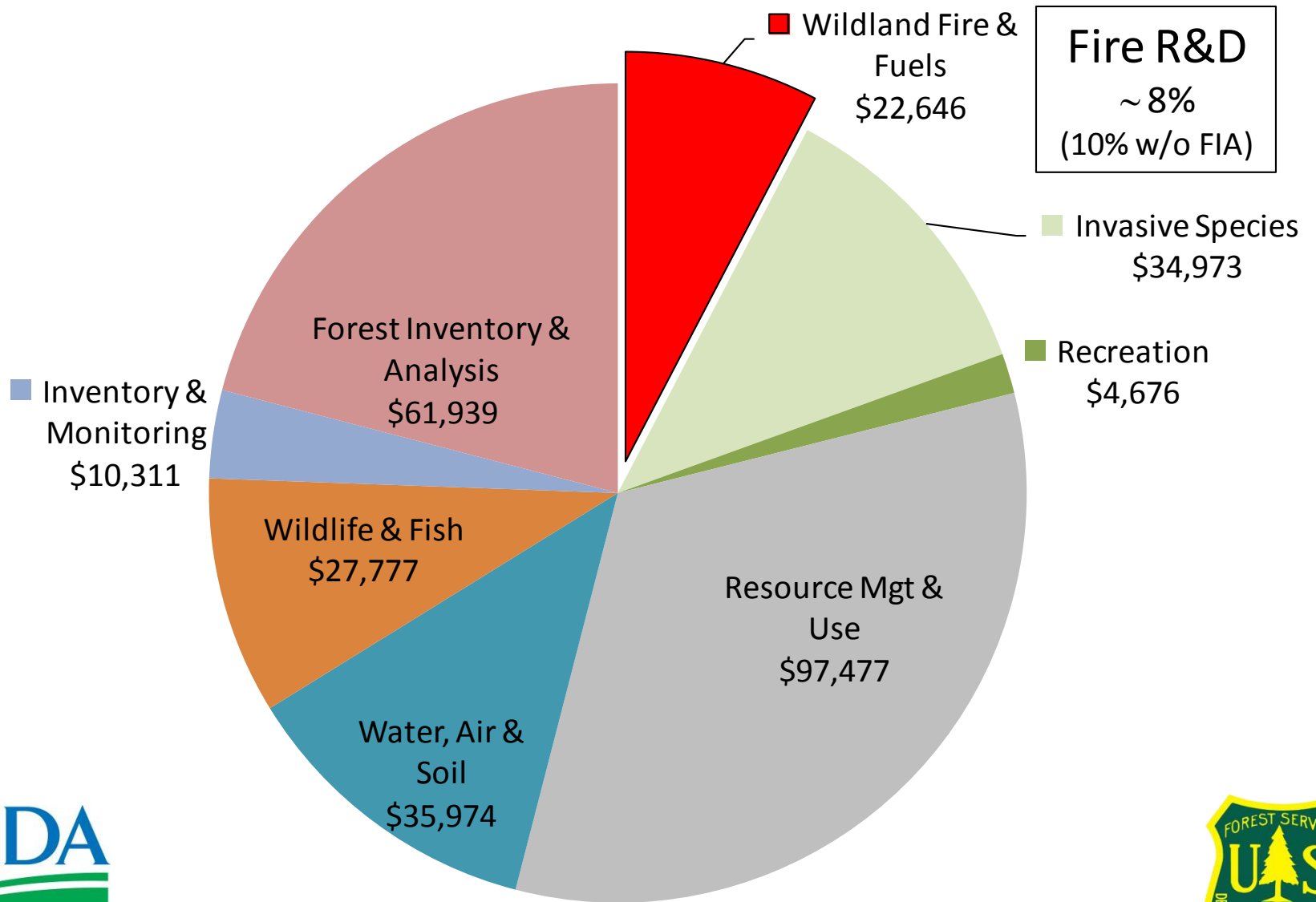
US Forest Service 2012 (President's) Budget - - \$ 5.14 billion



US Forest Service 2012 (President's) Budget - - \$ 5.14 billion



USFS 2012 R&D Budget - - \$ 296 million



USFS 2012 Fire R&D Budget is **1.12%** of Fire Management and Suppression

